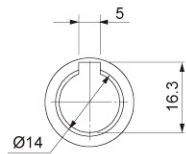
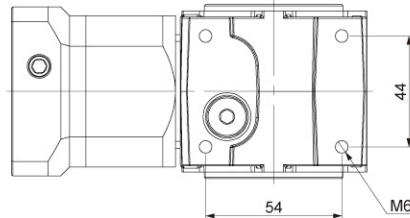
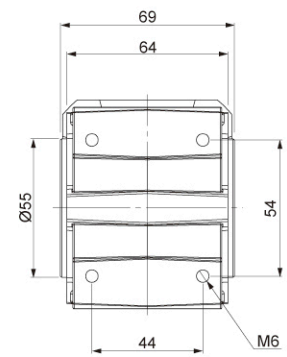
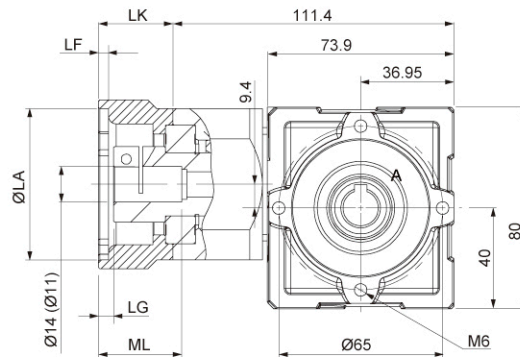
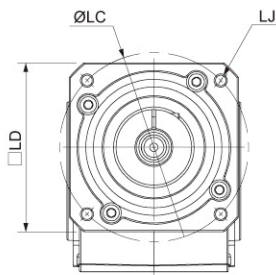
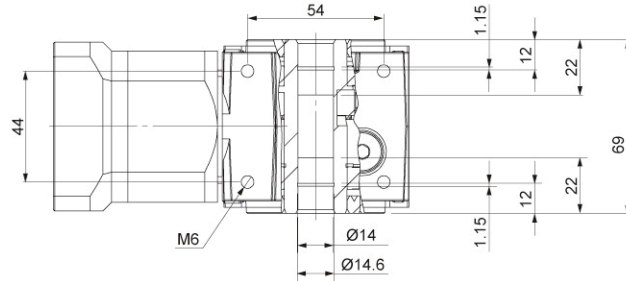


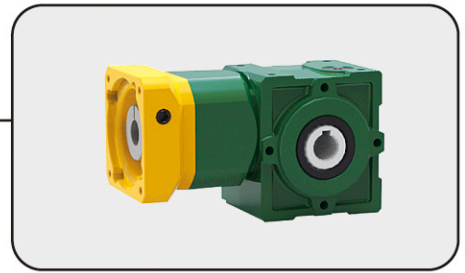
FSP-I4 TYPE Dimension



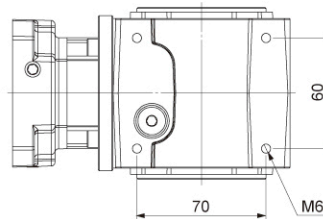
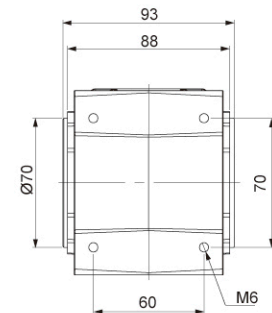
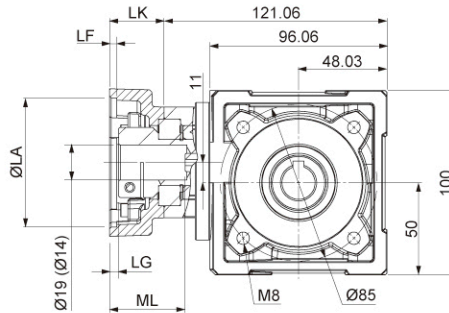
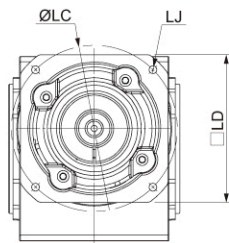
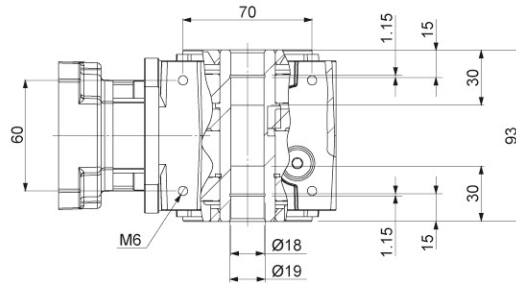
細部放大圖 A
比例 2 : 3.5



	5比 5 Ratio	10比 10 Ratio						
容許最大輸入扭矩 Max. Input Torque	1.3 N.m	0.65 N.m						
容許最大輸入轉速 Max. Input Speed	3000	3000						
框號 Frame	LC	LA	LD	LJ	LK	LF	LG	ML
060M4	60	50	60	M4xP0.7	29.5	4	5	33
	70	50	60	M4xP0.7	29.5	4	5	33
060M4A	63	40	60	M4xP0.7	29.5	4	5	33
060M5	70	50	60	M5xP0.8	29.5	4	5	33
060M5A	70	50	60	M5xP0.8	33.5	6	9	37
067M5	75	60	67	M5xP0.8	29.5	4	5	33
080M5	90	70	80	M5xP0.8	29.5	4	5	33



FSP-I8 TYPE Dimension



	5比 5 Ratio	10比 10 Ratio
容許最大輸入扭矩 Max. Input Torque	2.6 N.m	1.3 N.m
容許最大輸入轉速 Max. Input Speed	3000	3000

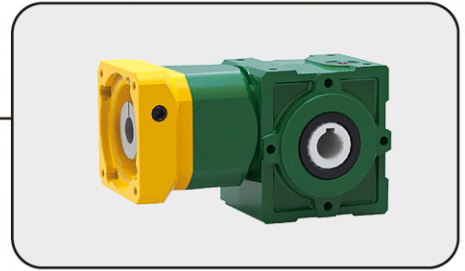
框號 Frame	LC	LA	LD	LJ	LK	LF	LG	ML
060M4	60	50	60	M4xP0.7	29.5	4	5	33
	70	50	60	M4xP0.7	29.5	4	5	33
060M4A	63	40	60	M4xP0.7	29.5	4	5	33
060M5	70	50	60	M5xP0.8	29.5	4	5	33
060M5A	70	50	60	M5xP0.8	33.5	6	9	37
067M5	75	60	67	M5xP0.8	29.5	4	5	33
080M5	90	70	80	M5xP0.8	29.5	4	5	33
080M6	90	70	80	M6xP1.0	34.5	9	10	46
080M6A	90	70	80	M6xP1.0	29.5	4	5	41
086M6	95	80	86	M6xP1.0	29.5	4	5	41
086M6A	100	80	86	M6xP1.0	29.5	4	5	41
090M6	104	83	90	M6xP1.0	29.5	4	5	41
100M6	115	95	100	M6xP1.0	29.5	4	5	41
100M8	115	95	100	M8xP1.25	29.5	4	5	41



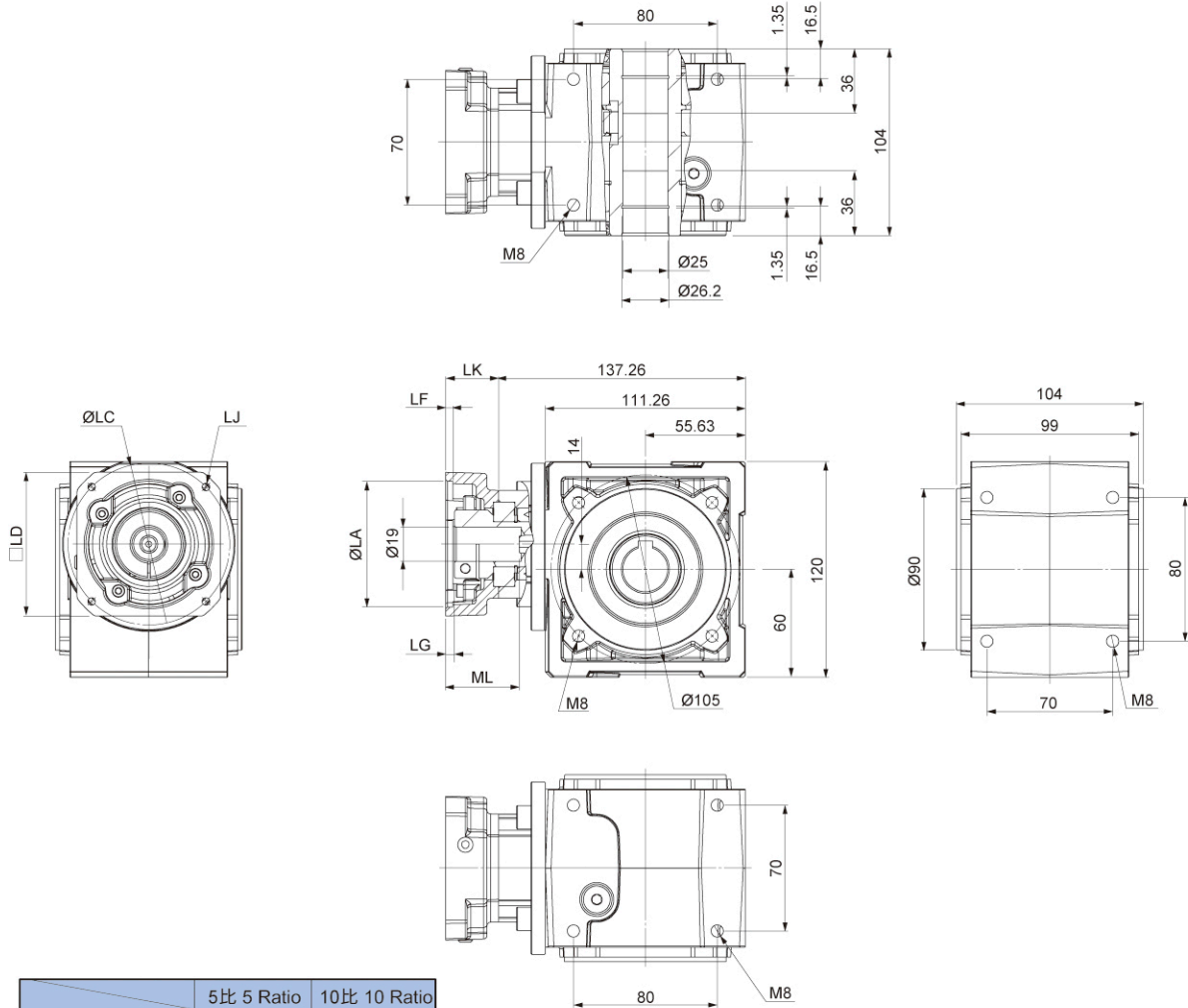
單段准雙曲面齒輪減速機

MOTORS & DRIVES

SINGLE STAGE HYPOID GEAR BOX



FSP-25 TYPE Dimension



	5比 5 Ratio	10比 10 Ratio
容許最大輸入扭矩 Max. Input Torque	5.0 N.m	2.6 N.m
容許最大輸入轉速 Max. Input Speed	3000	3000

框號 Frame	LC	LA	LD	LJ	LK	LF	LG	ML
080M5	90	70	80	M5xP0.8	29.5	4	5	41
080M6	90	70	80	M6xP1.0	34.5	9	10	46
080M6A	90	70	80	M6xP1.0	29.5	4	5	41
086M6	95	80	86	M6xP1.0	29.5	4	5	41
086M6A	100	80	86	M6xP1.0	29.5	4	5	41
090M6	104	83	90	M6xP1.0	29.5	4	5	41
100M6	115	95	100	M6xP1.0	29.5	4	5	41
100M8	115	95	100	M8xP1.25	29.5	4	5	41

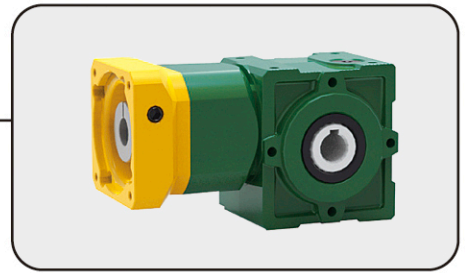
規格如有變更，恕不另行通知。 The specifications are subject to change by the manufacturer without prior notice.



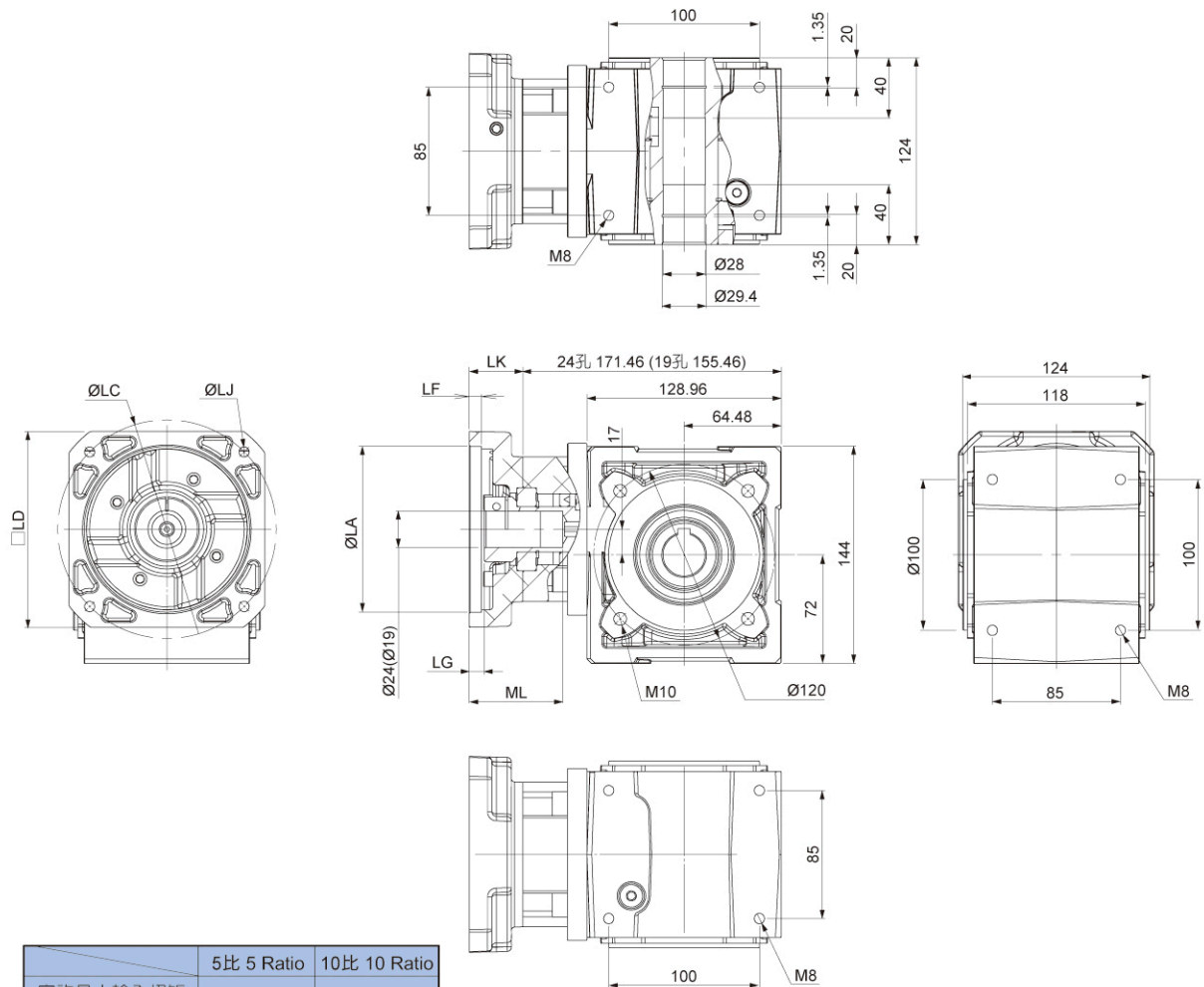
MOTORS & DRIVES

單段准雙曲面齒輪減速機

SINGLE STAGE HYPOID GEAR BOX



FSP-28 TYPE Dimension



	5比 5 Ratio	10比 10 Ratio						
容許最大輸入扭矩 Max. Input Torque	10 N.m	5.0 N.m						
容許最大輸入轉速 Max. Input Speed	3000	3000						
框號 Frame	LC	LA	LD	LJ	LK	LF	LG	ML
080M5	90	70	80	M5xP0.8	29.5	4	5	41
080M6	90	70	80	M6xP1.0	34.5	9	10	46
080M6A	90	70	80	M6xP1.0	29.5	4	5	41
086M6	95	80	86	M6xP1.0	29.5	4	5	41
086M6A	100	80	86	M6xP1.0	29.5	4	5	41
090M6	104	83	90	M6xP1.0	29.5	4	5	41
100M6	115	95	100	M6xP1.0	29.5	4	5	41
100M8	115	95	100	M8xP1.25	29.5	4	5	41
115M8	130	110	115	M8xP1.25	35.5	6	7	62
130M8	145	110	130	M8xP1.25	35.5	6	10	62

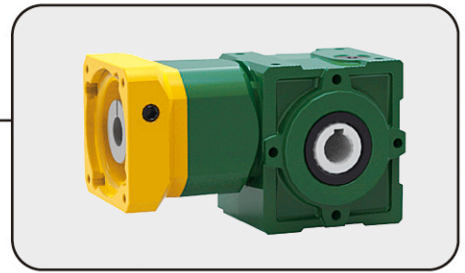
規格如有變更，恕不另行通知。 The specifications are subject to change by the manufacturer without prior notice.



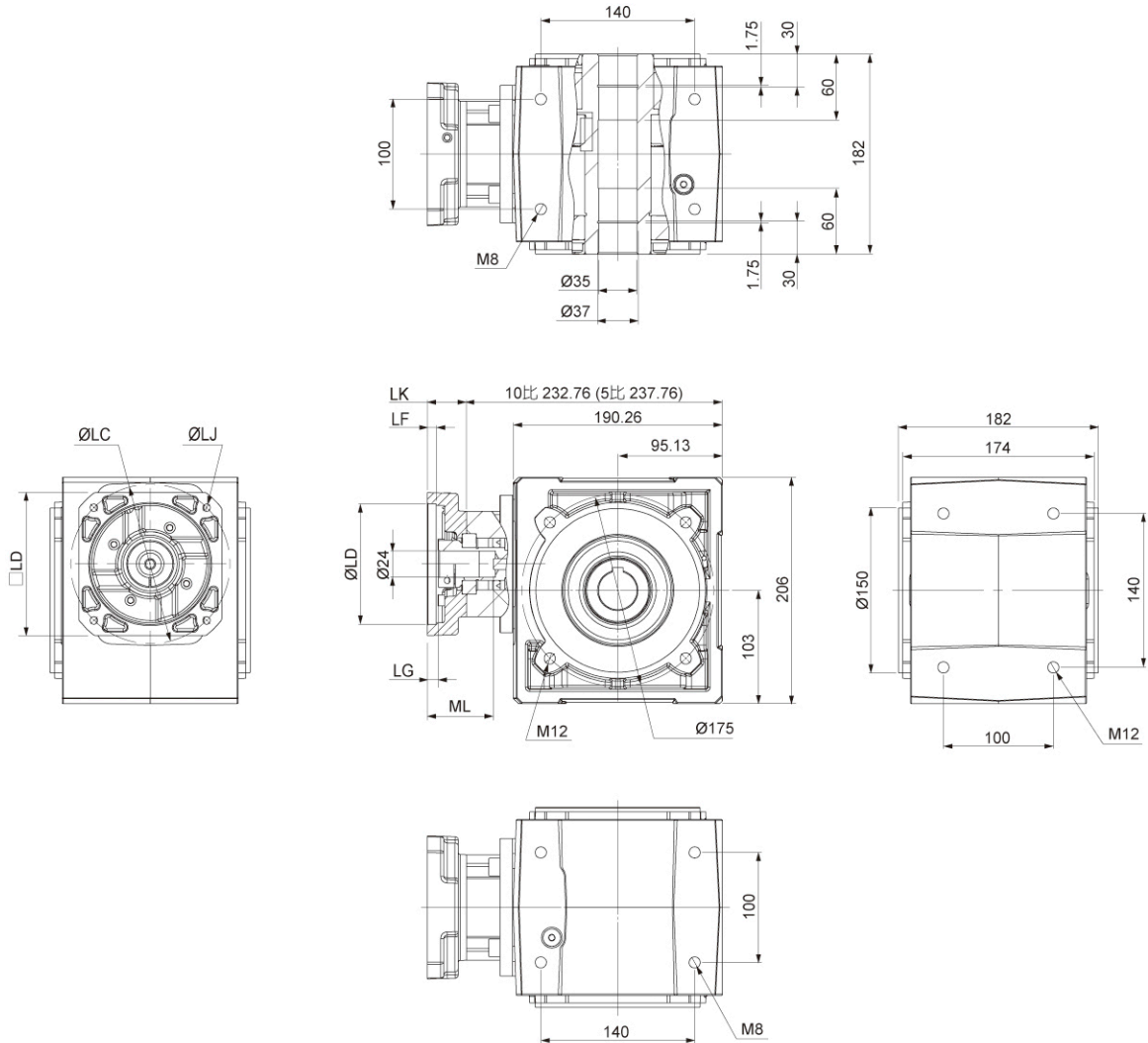
單段准雙曲面齒輪減速機

MOTORS & DRIVES

SINGLE STAGE HYPOID GEAR BOX



FSP-35 TYPE Dimension



	5比 5 Ratio	10比 10 Ratio						
容許最大輸入扭矩 Max. Input Torque	20 N.m	10 N.m						
容許最大輸入轉速 Max. Input Speed	3000	3000						
框號 Frame	LC	LA	LD	LJ	LK	LF	LG	ML
115M8	115	110	130	M8xP1.25	35.5	6	7	60
130M8	130	110	145	M8xP1.25	35.5	6	10	60

規格如有變更，恕不另行通知。 The specifications are subject to change by the manufacturer without prior notice.